

Managed WAN Acceleration

Virtela provides a comprehensive WAN Acceleration and Optimization suite of managed services to deliver enhanced performance and reduced latency impact on business-critical applications at key customer locations. Organizations are continuously searching for ways to improve WAN performance to provide their end-users LAN like performance. One option is to buy more bandwidth while another may be to implement a WAN Acceleration Solution. Virtela, with its extensive experience in evaluating global networking solutions can provide solutions for both situations. Virtela's Accelerated WAN Service delivers a fully managed solution, which includes:

- Assistance selecting appropriate hardware option
- Implementation and configuration
- Fine tuning the connection between locations in question
- Ongoing Management

Virtela's Accelerated WAN Service can address issues ranging from simple CIFS based file sharing, data compression, and application acceleration. Virtela's service is designed to work closely with the customer to identify problems and resolve the application issues with the appropriate solution.

As organizations explore new remote locations around the world to gain competitive advantages in manufacturing, developing or supporting their products, the sharing of information with these remote locations can bring its own challenges. In many instances organizations have built a VPN or MPLS network between locations and have invested a vast amount resources in allowing the various groups within the organization to communicate over this infrastructure. When people share information over the LAN, the expectation is the applications provide information in fractions of a second and files can be shared easily among co-workers.

This expectation carries over to the WAN environment, and when coworkers need to share an excel file or FTP a file from the Headquarters to a remote manufacturing facility, the application delays or latency over the connection can significantly impact usability. Delays impacted by inefficient application protocols, large files sizes or very high latency can become prohibitive to getting work accomplished. During these times, the organizations bottom line is impacted and is faced with a couple of options: buying more bandwidth or implementing a WAN Acceleration Solution.

Implementing a WAN Acceleration solution can assist a customer at several levels, such as data reduction, caching, compression, and acceleration.

Virtela's Accelerated WAN Service is a comprehensive managed suite of services that overcomes distance limitations by improving application and protocol performance over the WAN by two to three times on average, or as much as a factor of 30 times, depending on the application.



Key Benefits:

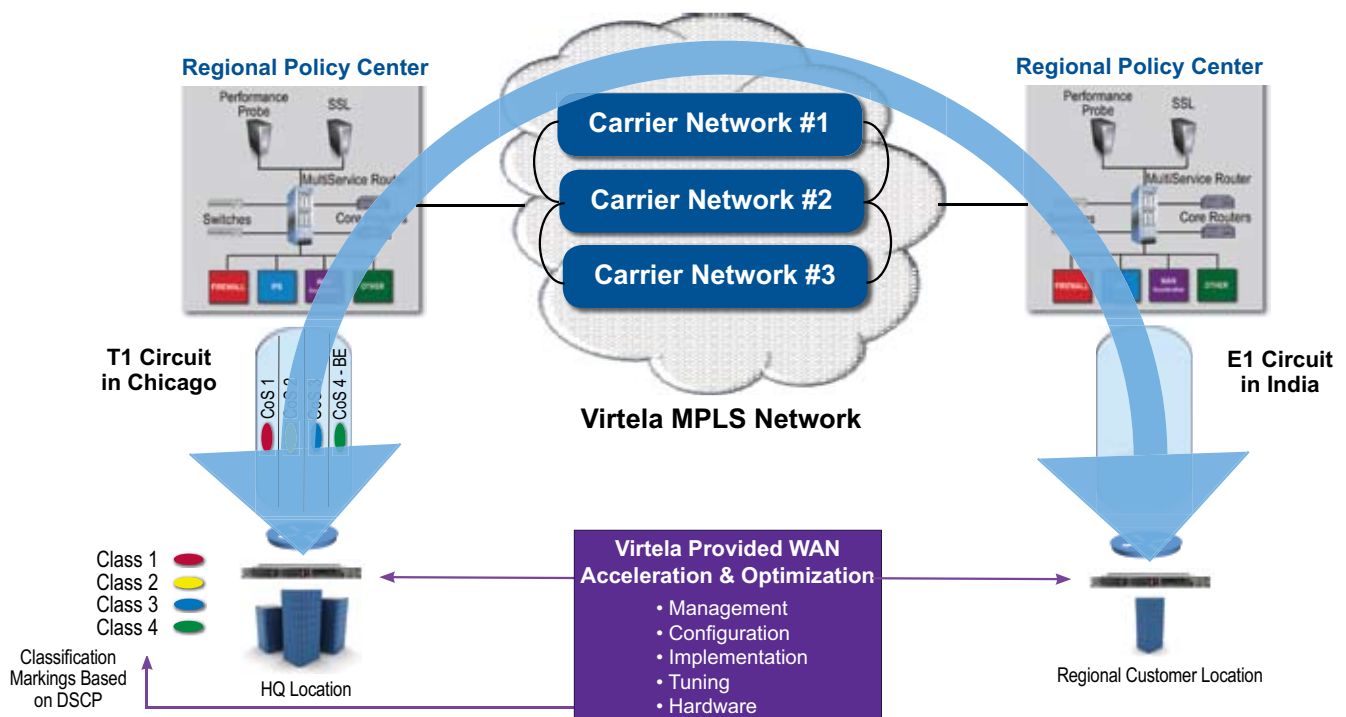
- Enhanced application response times
- Protocol improvements
- Latency impact reduction
- Address inherent bandwidth delay product issues
- Extensive features
- Multiple vendor options
- Global coverage

Managed WAN Acceleration

Virtela's Managed WAN Acceleration service offers access and equipment configuration, activation, installation, monitoring, maintenance, and consolidated billing.

Customers can use Virtela's Accelerated WAN Service not only to improve WAN service on an existing network but also to avoid WAN bandwidth upgrades otherwise needed to deploy a new application, to increase the number of users, or simply to avoid running out of bandwidth. A few of the benefits of an optimized WAN are:

- Companies can more quickly and efficiently back-up data across the WAN.
- The impact of 'chatty' protocols that consume a lots of bandwidth, such as CIFS, can now be minimized.
- Enterprises can continue server consolidation into data centers without the fear of adversely affecting application performance for remote users.
- Improved WAN performance can eliminate bottlenecks caused by servers.



About Virtela:

Virtela Communications Inc. delivers award-winning network and security solutions to many of the world's largest and fastest-growing multinational companies. Currently serving customers across six continents, Virtela's network reach spans more than 190 countries. Virtela's unique Global Service FabricSM offers the foundation for delivering critical applications via the company's acclaimed service methodology, with a services suite that includes MPLS and IP-based virtual private networks (VPNs), security services, remote monitoring and management of WAN/LAN infrastructure, and converged services (data, video, voice).

